

CeraRoot

**IMPRESSIONS**  
**PROTOCOL**

# CeraCrown

---

- CeraRoot is the first system in the world to provide the impression coping made of zirconia. The impression coping is called CeraCrown.
- There are 5 different CeraCrowns.
  - CeraCrown 11 (for implant **CeraRoot 11**)
  - CeraCrown 21 (for implant **CeraRoot 21**)
  - CeraCrown 12 (for implant **CeraRoot 12**)
  - CeraCrown 14 (for implant **CeraRoot 14**)
  - CeraCrown 16 (for implant **CeraRoot 16**)
- **CeraCrown is 3 products in 1:**
  - Impression coping
  - Temporary coping
  - Zirconia core to build on porcelain layers.
    - 3 colors available: white, A1, A2
- CeraCrown has been developed to avoid any grinding or cutting of the abutment part or the transgingival area. The shoulder of the CeraRoot implant, fits exactly on the margins of the CeraCrown. The fitting between the CeraRoot and the CeraCrown makes this system very easy to restore.

# CeraRoot

---

CeraRoot dental implants are designed to restore any teeth in the patients mouth. It's a ONE PIECE implant and the abutment and shoulder of the implant is READY TO RESTORE. There is no need of grinding or cutting the abutment part.



If the abutment is not modified the physical properties of the implant remain INTACT. The margin of the shoulder and the abutment size has been designed to restore most cases without any modification.



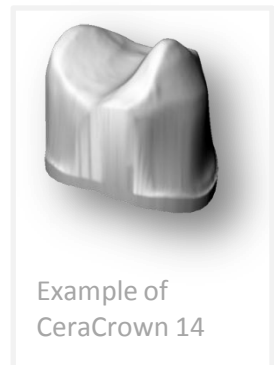
# CeraCrown & CeraRoot

---



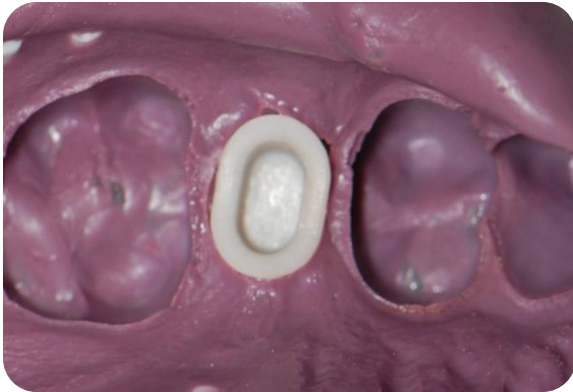
**WORLD NOVELTY:** the crown core is already manufactured before the implant is inserted in the socket. This is possible because the abutment has an anatomic design and is **READY TO RESTORE**.

Once the implant is osseointegrated and ready to be loaded, the dentist fits the CeraCrown (with the desired color: white, A1 or A2), on the abutment with wax or small amount of temporary cement to provide impression coping stability and achieve accurate impressions. When the CeraCrown has been fixed, the impressions with silicone can take place.



# CeraCrown

---



lab analogue inserted in the CeraCrown

Once the silicone has reached the desired stiffness the impressions can be removed from the mouth. In the silicone, we should see the CeraCrown (impression coping). Then the lab analogue can be connected using wax or temporary cement, the same procedure as in the mouth. Once the two parts are well assembled together, the stone plaster may fill in the impressions.



# CeraCrown

---



The dental technician, can start the work with the CeraCrown. The lab analogue is made of zirconia. This is a WORLD NOVELTY providing the exact same color conditions as inside the mouth and excellent high strength properties.



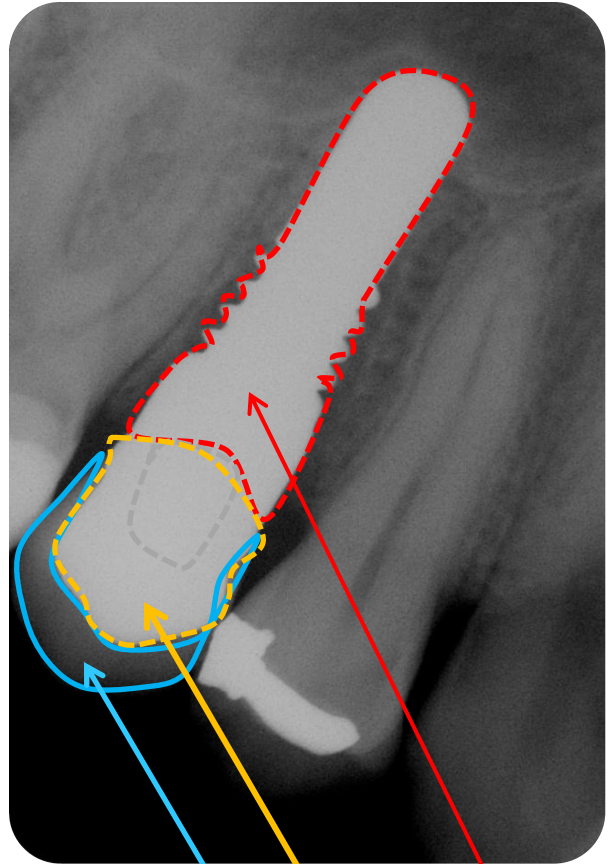
This is the finished CeraCrown (initial impression coping used to take impressions of the implant).

The dental technician has then, used this coping as a zirconia core to build up the definitive crown.

The internal part is zirconia and the external part is made of different porcelain/ceramic layers. (dentin, incisal, stains, etc...)

# CeraCrown & CeraRoot

---



CeraRoot

CeraCrown

Porcelain layers